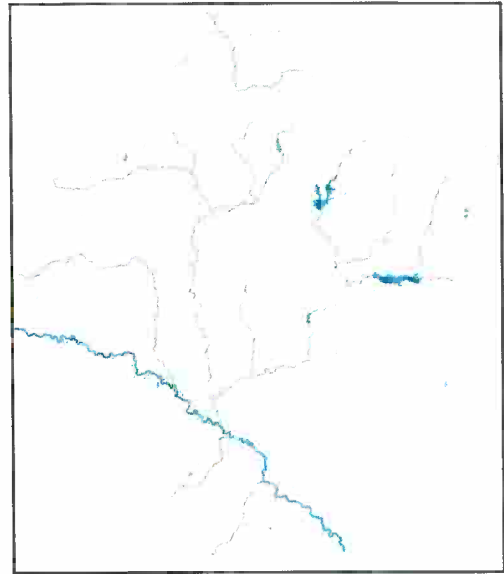


TEACHING UNIT: AN IRON AGE SETTLEMENT.

SITE OF *LAS ERETAS* (Berbinzana)

1- Place on the map:

- Archeological site of Las Eretas.
- Village where Las Eretas is located.
- Name of the river next to the site.
- Your School or High School village.
- Two more sites of the Iron Age.



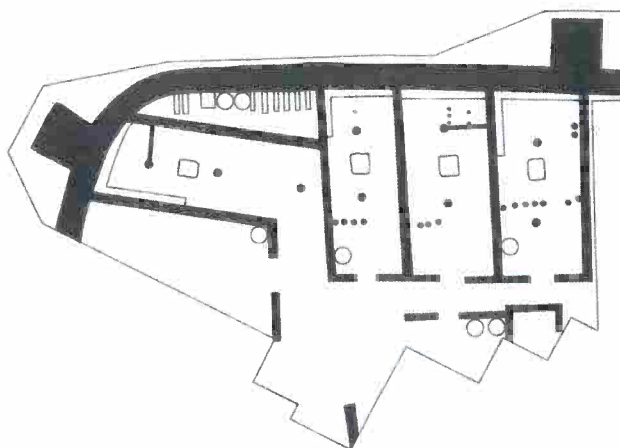
2- Colour in the timeline the centuries when the site of Las Eretas was inhabited and name the Era to which it belongs:

Era:

X b.C. IX b.C. VIII b.C. VII b.C. VI b.C. V b.C. IV b.C. III b.C. II b.C. I b.C. I a.D. II a.D.

--	--	--	--	--	--	--	--	--	--	--	--

3- Locate in the plan and place the following elements: *street, Bakery, rebuilt house, rampart and turrets.*



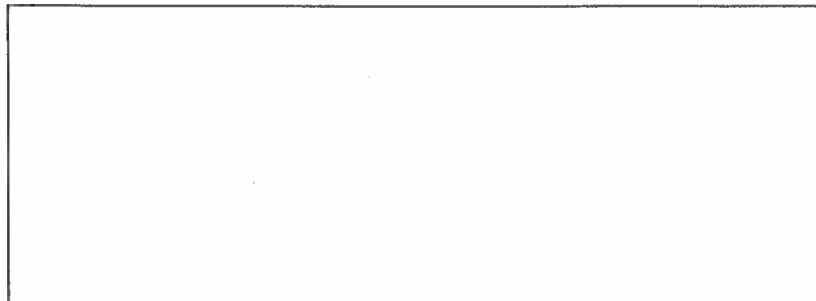
4- Observe the n.10 and n.11 boards and gather information to describe:

❖ **DEFENSIVE SYSTEM:**

- Parts of it:
- Building materials:
- Measurements (thickness and height):
- Imagine an attack to Las Eretas and explain how you would defend it:

❖ **THE REBUILT HOUSE:**

- Place, regarding the rampart:
- Shape:
- Size:
- Building materials (foundation, walls, floor, roof):
- Rooms (name and purpose):
- Imagine this blank square is a part of the wall of one of the houses. Decorate it following the likes and colours that they had at the Iron Age.



5- According to what you have read on boards n.7 and n. 8, and the objects you have seen in the displays cabinets, show which **activities** people carried out to obtain food, clothing and utensils for their day-to-day life, and which remains have reached to us.



6- About **trading** (help yourself with board n.9), How did they trade? What was **going** to be used at the end of the Iron Age (**II b.C. century**) to be traded?



7- Now, we are going to work about **household items**. Look in the display cabinet for 6 items which we do still use nowadays and draw them. Mark its function, materials they are made of and the main difference with the present ones.

<p>Material: bone</p> <p>Function: sew</p> <p>Differences: they are made of metal instead of bone and they are thinner.</p>	<p>Material:</p> <p>Function:</p> <p>Differences:</p>	<p>Material:</p> <p>Function:</p> <p>Differences:</p>
<p>Material:</p> <p>Function:</p> <p>Differences:</p>	<p>Material:</p> <p>Function::</p> <p>Differences:</p>	<p>Material:</p> <p>Function:</p> <p>Differences:</p>

8- Funeral rites and cults (boards n.4 and n.5). Describe the funerary cults of the inhabitants of Las Eretas, the place where they were buried, their rites, what they did when a child died, and when a warrior died, etc. Are there any similarities to our current customs?



9- Observe the mock-up of the Castro de Galtzarra (Valley of Lana) and say which activities the inhabitants are carrying out. By the way, have you found the wolf? Where?

10- Match each word with its meaning. To do so, place the number before the meaning..

- | | |
|------------------|---|
| 1- Silex/flint | ___ Mixture of mud and straw, dried under the heat of the sun. |
| 2- Counterweight | ___ Stone used in Prehistory to make utensils. |
| 3- Settled | ___ This person has a permanent place to live. |
| 4- Craftsman | ___ Skilled craft person. |
| 5- Adobe | ___ Round piece of pottery or bone used to balance the spindle. |

11- Imagine an Iron Age settlement and recreate it based on what you have seen in the Museum.

12- Write down your impressions about the settlement of Las Eretas and show the most important differences and similarities to our Era.